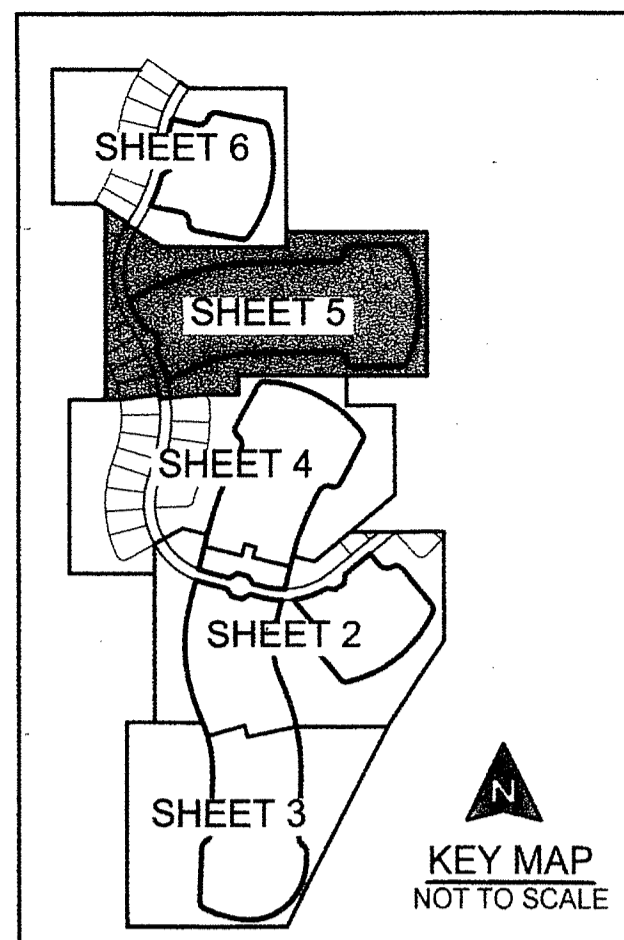
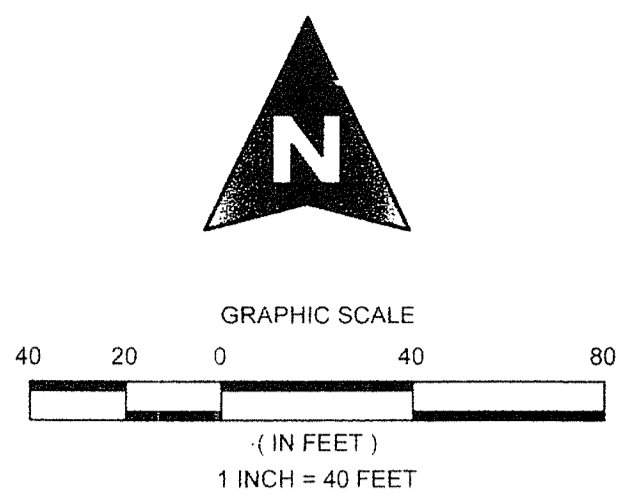


SONOMA ISLES PLAT 3

LYING IN SECTION 32, TOWNSHIP 40 SOUTH, RANGE 42 EAST AND SECTION 5, TOWNSHIP 41 SOUTH, RANGE 42 EAST, TOWN OF JUPITER, PALM BEACH COUNTY, FLORIDA, BEING A RE-PLAT OF PARCELS "K", "L", "M", "O" AND "Q", PLAT OF SONOMA ISLES, AS RECORDED IN PLAT BOOK 120, PAGES 167 THROUGH 179, INCLUSIVE, PUBLIC RECORDS OF PALM BEACH COUNTY, FLORIDA.

SHEET 5 OF 6

AUGUST, 2016



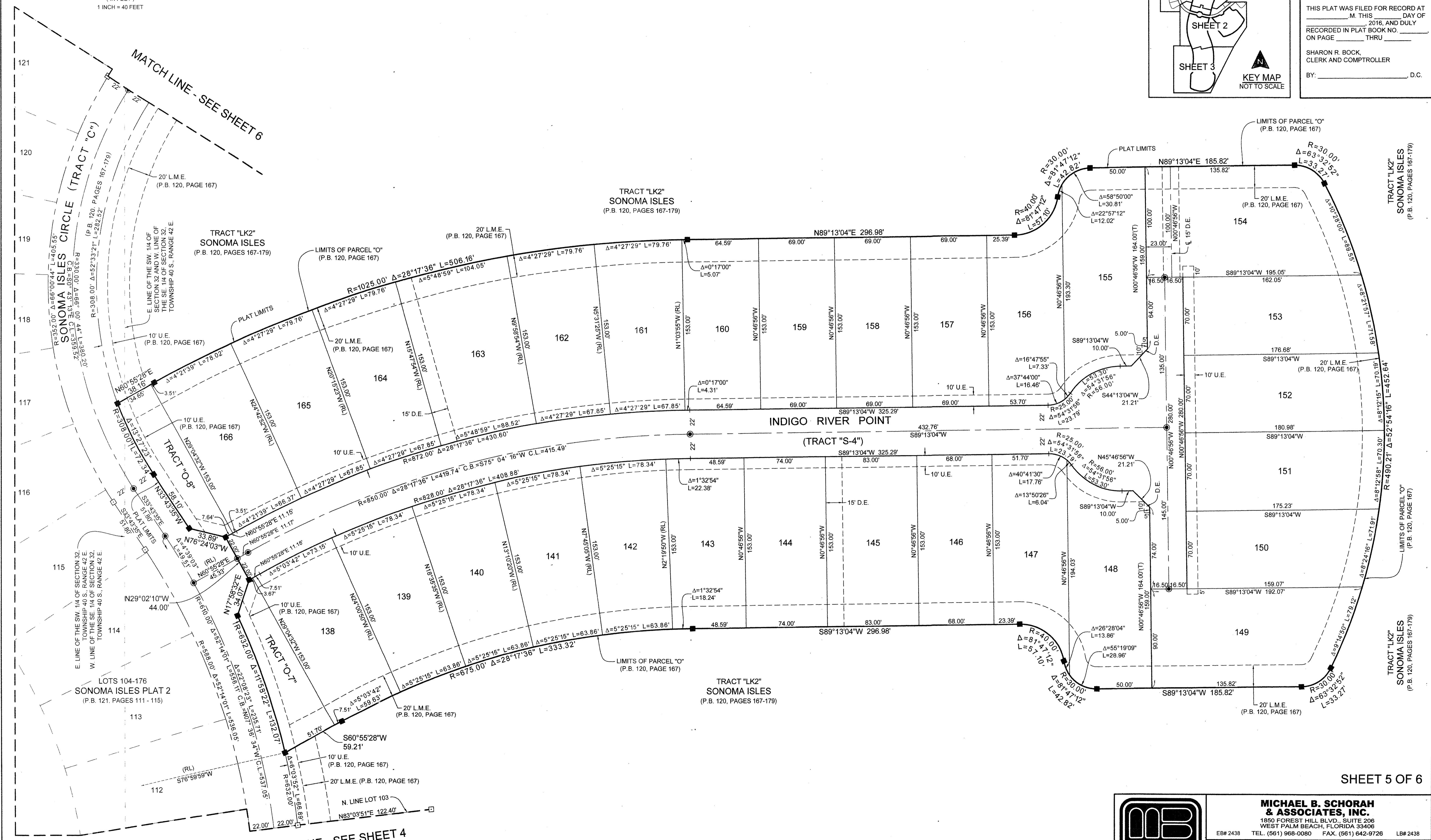
96

COUNTY OF PALM BEACH)
STATE OF FLORIDA) SS

THIS PLAT WAS FILED FOR RECORD AT _____ M. THIS _____ DAY OF _____, 2016, AND DULY RECORDED IN PLAT BOOK NO. _____ ON PAGE _____ THRU _____

SHARON R. BOCK,
CLERK AND COMPTROLLER

BY: _____ D.C.



SHEET 5 OF 6



MICHAEL B. SCHORAH & ASSOCIATES, INC.
1950 FOREST HILL BLVD., SUITE 206
WEST PALM BEACH, FLORIDA 33406
EB# 2438 TEL. (561) 968-0080 FAX. (561) 642-9726 LB# 2438

SONOMA ISLES PLAT 3